

# MANDATORY

# TRAILER TPMS/TPRS

# FROM JULY 2024



The UN ECE R 141 prescribes, among other things:

If a tyre pressure loss of 20% or a malfunction occurs, the driver must receive a warning in the cab within ten minutes.



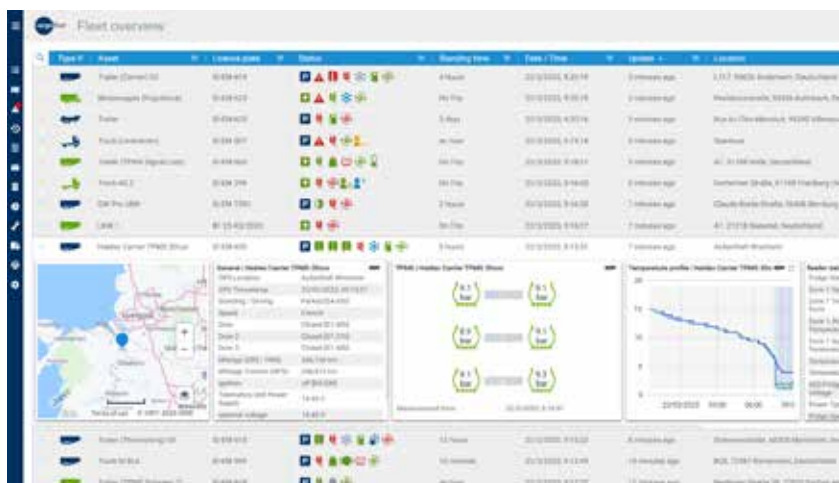
# UN ECE R 141 legal requirements for new vehicles

- Deviations in tyre pressure of >20% must be displayed in the truck
- Standardized EBS interface for TPMS/TPRS data - also from third-party suppliers
- UN ECE R 141 compliant TC Trailer Gateway BASIC telematics box (control unit incl. TPMS)
  - complies with UN ECE R 141 without additional service fees/costs
  - additional telematics benefit for vehicle manufacturers and/or end customer can be activated without problems
- One system for all EBS modulators - only one sensor type required
- EBS manufacturer-independent installation and configuration
- Proof of UN ECE R 141 conformity (sensors + control unit) by idem
- Support by idem in the installation process and documentation in vehicle production



## Additional benefits from Telematics functions

- More detailed TPMS information (also available online in the portal and via app): Tyre pressure and temperature, evaluations, alarms
- Fuel savings through optimal tyre pressure
- Alarms in case of deviations (via mail and SMS)
- Proactive action option (Tyre pressures with fixed-time messages even in parked condition)
- Integration of TPMS information into digital maintenance calendar
- Forwarding of TPMS data to tyre manufacturer/tire service provider possible



## Our telematics unit for monitoring trailers and semi-trailers.

### TC Trailer Gateway BASIC



Integrated **EBSData** **TireMonitor**

- ✓ Track & Trace
- ✓ Satellite Positioning
- ✓ Geofence
- ✓ Tour-/Route-Monitoring
- ✓ Stock Management
- ✓ Maintenance and Diagnostics
- ✓ Service Data
- ✓ Battery Heater
- ✓ EBS Data
- ✓ Tyre Monitoring
- ✓ Break Pad Wear (EBS)
- ✓ EBPMs
- ✓ Data Transfer via BLE
- ✓ Truck & Trailer Coupling
- ✓ Service App
- ✓ Alarming
- ✓ Reports